

aquadis+

volumetric cold water meter



altecnic
Caleffi group

aquadis volumetric water meter



Design

The Altecnic Aquadis+ volumetric meter for cold water applications is a MID 2004/22/EC approved and complies with BS EN 14154 offering a dependable and accurate reading of water consumption and is ideally suited for use in residential applications.

WRAS approved product.

Technology

Aquadis+ combines the advantages of piston type technology together with proven reliability of the extra dry registers.

No gears are in contact with water.

Hermetical measuring element, using the concept of magnetic transmission.

Hydraulic Performance

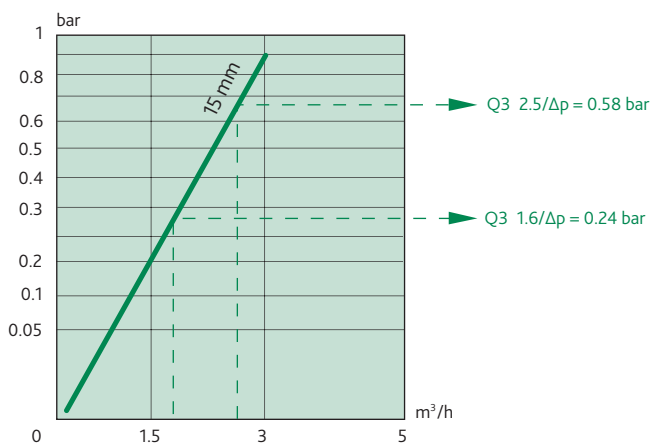
- Very low starting flow allows leakage detection.
- Large measuring range.

Construction

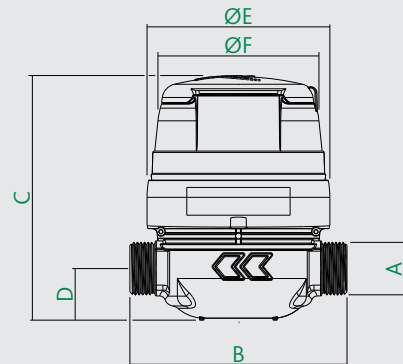
- The Aquadis+ has a composite case made from a special thermoplastic material with the highest mechanical characteristics suitable for replacing the traditional brass or bronze materials, without any restrictions in metrology or resistance to pressure.
- Large numbered rollers with good contrast for easy reading.
- Maximum admissible working pressure is 16 bar
- Supplied with male union connections.

Product Code	Size	Description
PS-100001	½"	cold water - non pulsed
PS-P00001	½"	cold water - pulsed

Pressure Loss Chart



Dimensions



Nom. Size	A	B	C	D	E	F	kg
15	G¾	134	123	26	92	82	0.49

Communications

Aquadis+ is always pre-equipped with proven Cyble technology, making it possible to mount plug-and-play Cyble modules at any time. This opens the opportunity to a large range of advanced and reliable AMR systems:

- Pulse output - 1 pulse per litre.
- M-Bus wired systems - walk-by or fixed network.
- Radio walk-by systems.
- Radio fixed data collection systems.

Key Advantages of Cyble Technology

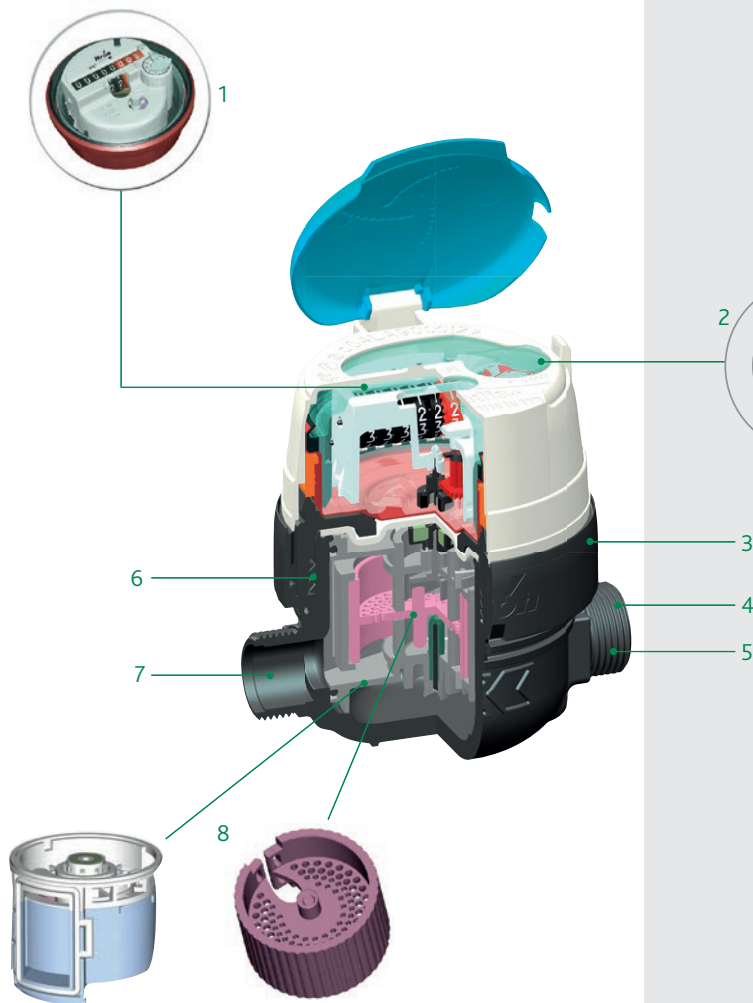
- Standardized meter interface, irrespective of meter technology.
- No need for additional investment on the meter to implement remote reading.
- Electronic detection principle - no wear or bounce.
- Leak detection.
- Reverse flow detection.
- Fraud detection.
- Not sensitive to magnetic fields.
- Good index correlation.



Radio frequency cyble pulse unit fitted on Aquadis+ meter

aquadis volumetric water meter

Operating Principle



Aquadis+ register

1 Hermetically sealed register - counter

Glass lens and copper can register, condensation and water proof (IP68) allows continuous visibility to read the register.

2 Communication

Pre-equipped with proven Cyble target allowing the meter's integration into remote reading systems by adding the relevant module.

3 External ring to protect the enclosure.

4 Monobloc threads

Optimised design to facilitate installation and maintain strength.

5 Internal filter

6 Pressure ring

Composite screwed ring closing the pressure plate

7 High performance composite material

Light with high resistance to pressure and ageing.

8 Outstanding accuracy and long term performance

The hydro-dynamically balanced piston, obtained by an innovative design of measuring elements, enables not only detection of extremely low flow rates <1 l/h in a wide range of flow rates, but also over a long life expectancy retains stable and accurate.

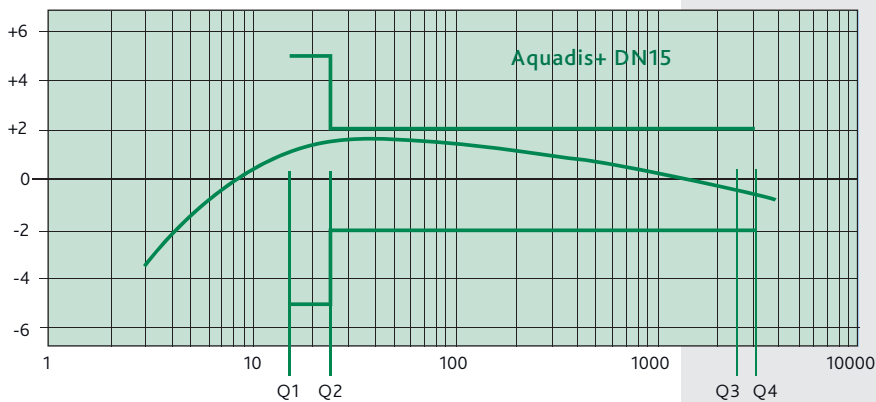
aquadis volumetric water meter

Technical Specification

Nominal Diameter DN		mm	15
		inches	3/4"
MID Metrology Class (R) - all positions			315
MID Type Approval Number			LNE 13636
Nominal flow rate	Q3	m ³ /h	1.6
Standard ratio	Q3/Q1		100
Minimum flow rate	Q1	l/h	16
Transitional flow rate	Q2	l/h	25.6
Overload flow rate	Q4	m ³ /h	2
Typical starting flow rate		l/h	< 1
Accuracy ± 5%		l/h	4
Accuracy ± 2%		l/h	8
Pressure loss class at Q3		bar	0.25
Maximum admissible pressure (MAP)		bar	16
Test pressure		bar	25
Max. operating temperature (MAT)		°C	50*
Climatic Environment		°C	5 to 55
Indicator range		m ³	99999.999
Minimum scale interval		l	0.02

* Do not use for hot water

Accuracy



According with MID, ISO Standards and OIML Recommendations, the metrology classed A, B, C and D are replaced by the value of the ratio (R) between nominal flow (Q3) and minimum flow (Q1).

Aquadis+ meters may be fitted with:

- Cyble modules - factory fitted.
- Non return valves for outlet pipe
- Removable cap

E & O.E

Altecnic Ltd Mustang Drive, Stafford, Staffordshire ST16 1GW

T: +44 (0)1785 218200 E: sales@altecnic.co.uk

Registered in England No: 2095101

altecnic.co.uk

AL 253 30-09-16

altecnic
Caleffi group