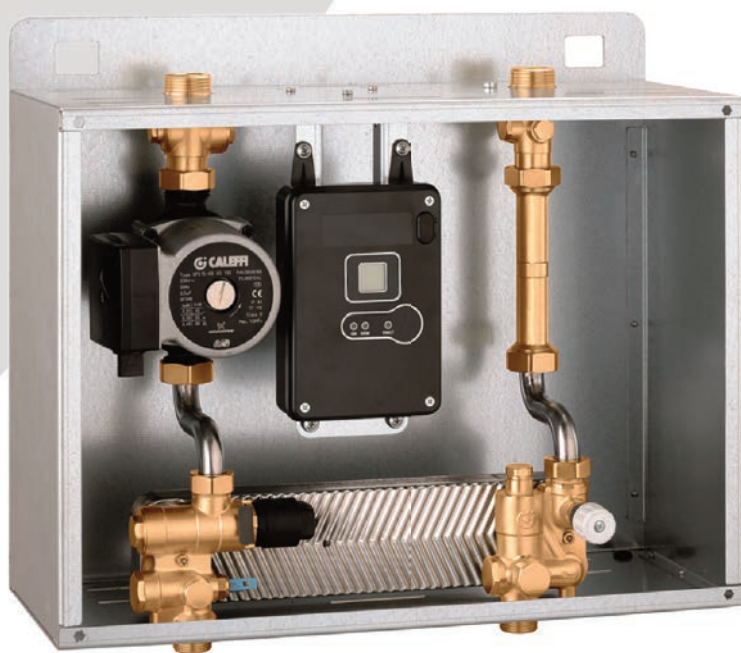


# SATK102

heat interface unit



 **CALEFFI**  
Hydronic Solutions



**altecnic**  
Caleffi group

# SATK 102 heat interface unit



## Introduction

The SATK102 heat interface unit is the latest 'intelligent' range of HIU from Altecnic.

The SATK102 controls the domestic hot water generated in an individual apartment supplied by a centralised boiler or district heating system.

## Design

The on-board electronic control unit ensures maximum efficiency and control but crucially also enables additional important features.

The SATK102 is available with a circulation pump on the primary heating circuit from the centralised boiler.

A high efficiency primary circulation pump is also available.

The SATK102 is extremely compact in design and lightweight, benefitting installers and architects alike.

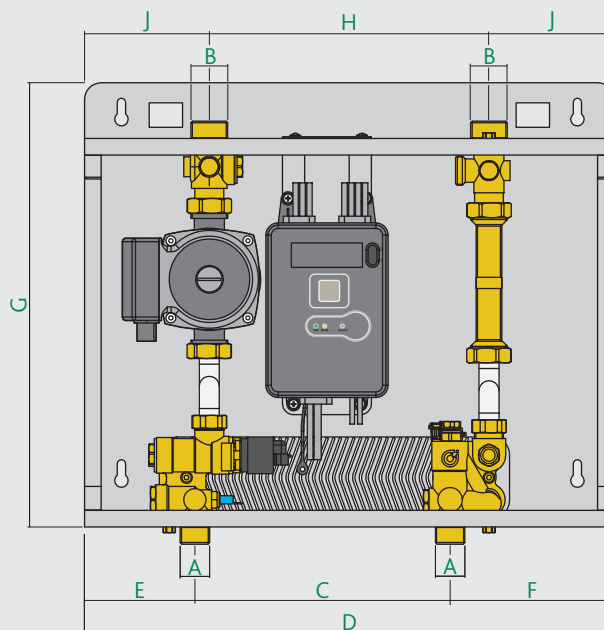
The unit can be fitted with isolation valves that allows both the primary and secondary sides to be isolated for future maintenance should it be needed.

## Product Range

- SATK10253** 50 kW plate heater exchanger.
- SATK10203** 50 kW plate heater exchanger and primary pump.
- SATK10203HE** 50 kW plate heater exchanger and high efficiency primary pump.
- SATK10254** 75 kW plate heater exchanger.
- SATK10204** 75 kW plate heater exchanger and primary pump.
- SATK10204HE** 75 kW plate heater exchanger and high efficiency primary pump.
- SATK10255** 85 kW plate heater exchanger.
- SATK10205** 85 kW plate heater exchanger and primary pump.
- SATK10205HE** 85 kW plate heater exchanger and high efficiency primary pump.

The performance of all HIUs are based @ 80°C Primary, 10°C BCW, 55°C DHW.

## Dimensions



Connection	A	B
Thread	G $\frac{3}{4}$ B	G1B

C	D	E	F	G	H	J	Depth
230	476	99	147	399	252	112	188

## Technical Specification

### Component

Frame:	galvanised steel
Components:	brass BS EN 12165 CW617N
Connecting pipework:	stainless steel

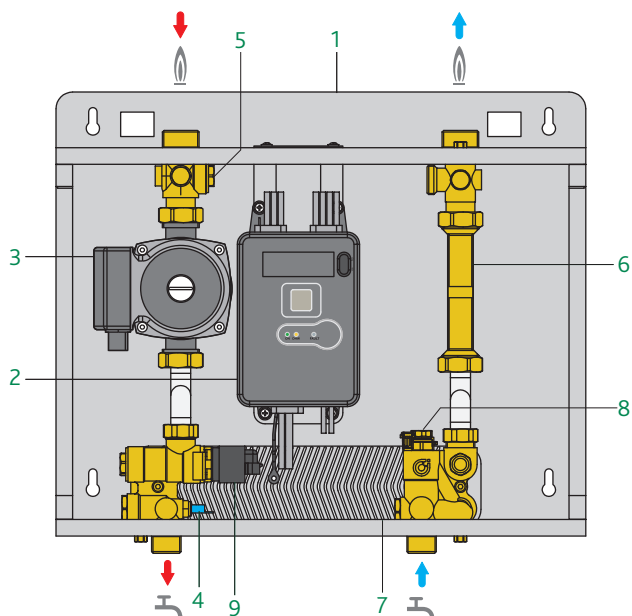
### Materials

### Performance

Test pressure:	16 bar
Max. static working pressure:	Primary: 10 bar Domestic hot water: 10 bar
Max. primary differential pressure ( $\Delta p$ ):	0.9 bar
Min. differential pressure ( $\Delta p$ ):	0.35 bar
Medium:	Water
Max. percentage of glycol:	30%
Maximum temperature:	85°C
Min. flow rate to activate domestic flow sensor:	2.7 l/min $\pm$ 0.3
Power supply:	230 V (ac) $\pm$ 10% 50 Hz
Max. power consumption:	20 W (SATK 102) 80 W (SATK 102...HE)
Standby power consumption:	5 W
Protection class:	IP 40
Pump:	UPS2 15/60 (SATK 102...HE)
Actuator:	stepper 24 V
Probes:	NTC 10 k $\Omega$

# SATK 102 heat interface unit

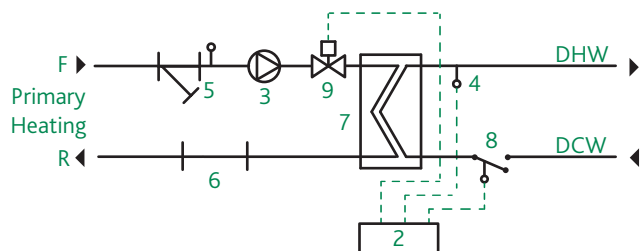
## Components



## Components

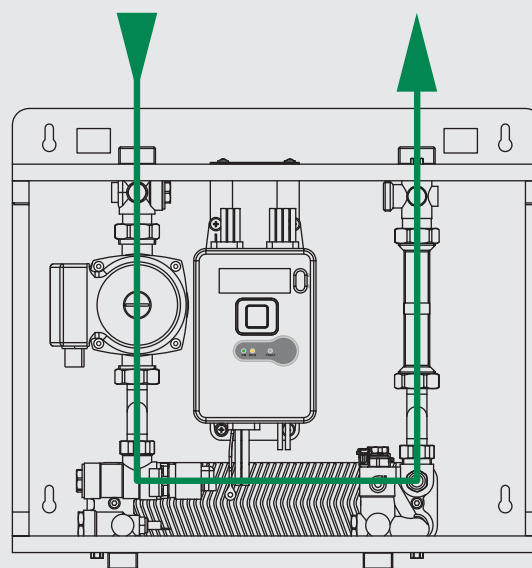
- | Item | Component                                  |
|------|--|
| 1    | Frame                                      |
| 2    | Electronic controller                      |
| 3    | Pump (SATK102X/SATK1020X HE)               |
| 4    | DHW temperature sensor                     |
| 5    | Flow temperature pocket probe and strainer |
| 6    | Energy meter spool piece                   |
| 7    | Plate heat exchanger                       |
| 8    | Flow switch                                |
| 9    | Modulating primary control valve           |

## Schematic SATK102



## Hydraulic Characteristics and Maximum Flow Rates Domestic hot water production - primary circuit

Model	Kv	Power Output	Max DHW flow rate
SATK102...3	1.8	50 kW	15.9 l/min - 0.27 l/s
SATK102...4	2.3	75 kW	23.9 l/min - 0.40 l/s
SATK102...5	2.4	85 kW	27.1 l/min - 0.45 l/s



# SATK 102 heat interface unit

E & O.E  
© Altecnic Ltd. 2017

Altecnic Ltd Mustang Drive, Stafford, Staffordshire ST16 1GW

T: +44 (0)1785 218200 E: sales@altecnic.co.uk

Registered in England No: 2095101

[altecnic.co.uk](http://altecnic.co.uk)

AL 217 28-06-17

**altecnic**  
Caleffi group