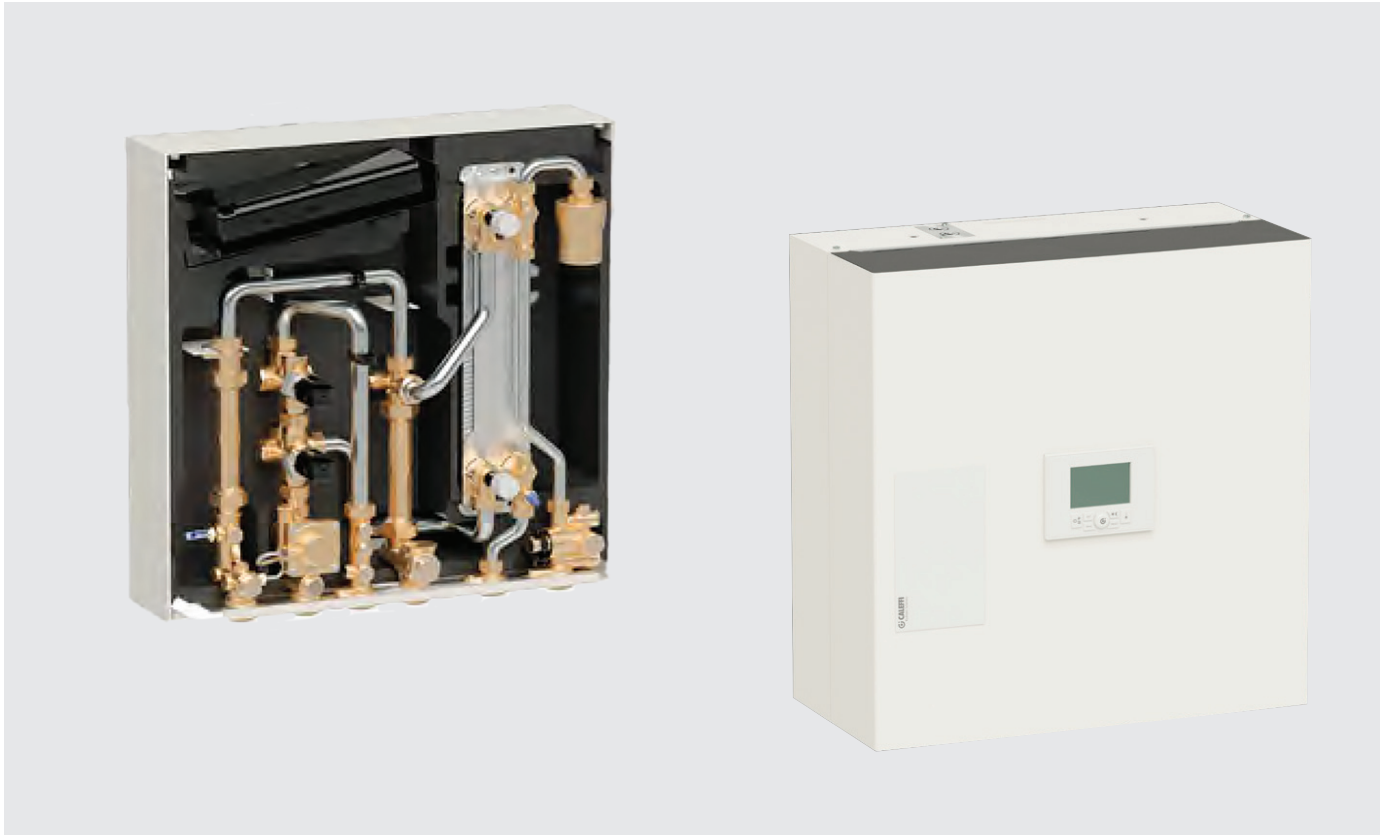


COMPACT WALL MOUNTED
DIRECT HEAT INTERFACE UNIT
INSTANTANEOUS DHW PRODUCTION
HIGH TEMPERATURE

altecnic
CALEFFI group

SATK22305 HIU



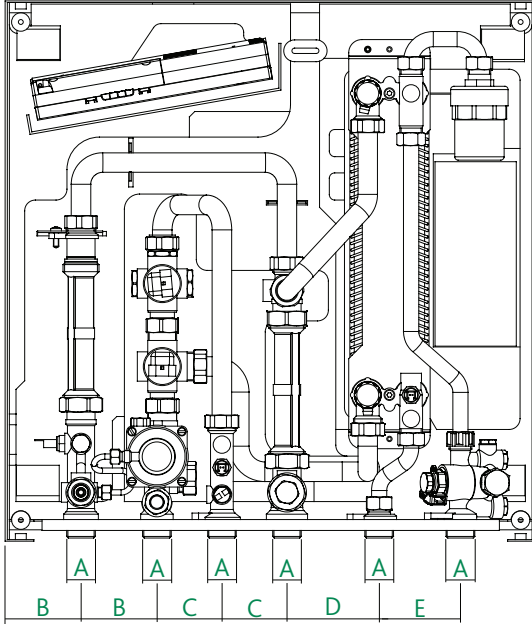
Functions and Features

- Wall-mounted direct heat interface unit for HIGH temperature heating and domestic hot water which has 100% priority
- Return temperature limitation (RTL) - Primary flow rate limitation - Programmable keep warm (CP1 best practice)*
* requires activation using the controller
- Max. temperature 90°C
Heat exchanger 60 kW
Primary and secondary water circuits completely separate
- Dual function user interface and room chrono-thermostat. Can be installed either on the HIU or the wall, in a position where the temperature is significant for heating control
- Compact size, simple installation, use and maintenance, reversible installation to allow top or bottom entry pipework
- If the room chrono-thermostat is fitted on the cover of the HIU, the thermostat function can be disabled. Each zone in the apartment must have its own independent chrono-thermostat



Dimensions

Overall Dimensions: W 490 x H 500 x D 245



A	B	C	D	E
G $\frac{3}{4}$ M	70	60	85	75

Technical Specification

Maximum medium temperature:	90°C
Maximum working pressure: - primary circuit:	10 bar
- domestic water circuit:	10 bar
DHW heat exchanger capacity:	60 kW
DHW temperature range:	10 to 48°C
Primary circuit flow rate:	1100 l/hr
Primary flow return temperature:	70 to 23°C
Domestic hot water flow rate:	22.7 l/m
Nom. pressure loss on primary circuit:	Δp 50kPa
Max. head on primary circuit:	Δp 6 bar
Min. flow to activate domestic water meter:	1.5 l/m
Electric supply:	230 V ac \pm 10% 50Hz
Max. Power consumption:	80 W
Protection class:	IP 4
Actuators:	stepper 24 V
Probes:	NTC 10 k Ω
Heat meter ready:	G1 x 130mm

Accessories



789110 Manual flushing bypass

System side connections: $\frac{3}{4}$ " F

HIU side connection: $\frac{3}{4}$ " M

ALT-BVHIU06 secondary ball valve pack



© Patents & Design Altecnic 2025

Altecnic Ltd retains all rights (including patents, designs and copyrights, trademarks and any other intellectual property rights) in relation to all information provided on or via the website, brochures or any other documents, including all texts, graphics and logos, contained on the website, in brochures or in any other documents published in the name of or on behalf of Altecnic Ltd in any form, without prior written consent of Altecnic Ltd.

Altecnic Ltd Francesco House, Staples Close, Stafford ST16 1WQ

T: +44 (0)1785 218200 E: sales@altecnic.co.uk

Registered in England No: 02095101

altecnic.co.uk

AL 488 23-01-25

E & O.6

© Altecnic Limited. 2025

ALTECNIC™